



CHOOSING THE RIGHT PATTON SMARTNODE FOR YOUR 3CX PHONE SYSTEM



©Deerfield Communications
4241 US 27 South
Gaylord, MI 49735
Email: sales@deerfield.com
Phone: 989.732.8856
Skype: skype.deerfield

Table of Contents

Introduction	3
Choosing a PSTN Gateway	3
For ISDN PRI or T1 robbed-bit lines in the US	4
For analog lines	4
Choosing a Terminal Gateway	5
Migrating Smoothly from Legacy to IP.....	6
For ISDN PRI or T1 robbed-bit lines in the US.....	6
For analog lines	7
Additional Information.....	7

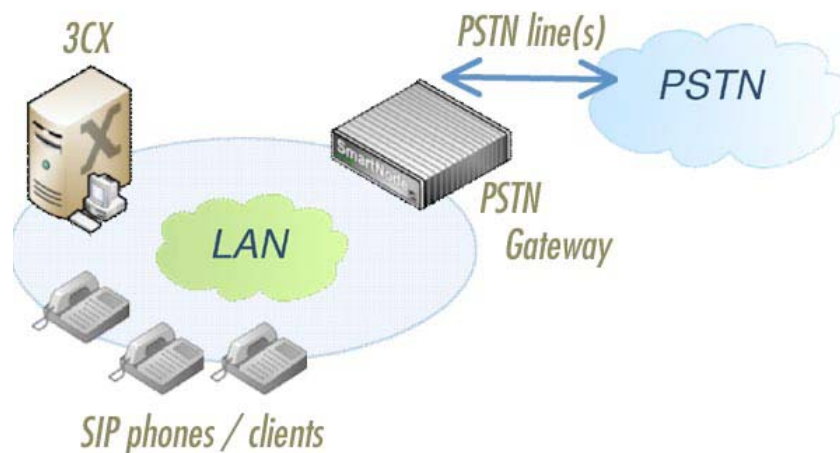
Introduction

Together with the 3CX phone system software, you will probably need some hardware to interface with existing telephony equipment, fax machines or phone lines. Patton offers a complete line of reliable, stand-alone VoIP gateway hardware called SmartNode, which does exactly that. All SmartNodes are tightly integrated with the 3CX phone system and, of course, extensively tested for interoperability.

This document helps you to identify the right SmartNode for your needs.

Choosing a PSTN Gateway

To connect your 3CX phone system to the physical PSTN telephony lines you have available, consider the following models. They are ordered by interface type and call capacity, and connect through SIP over the IP network to the 3CX phone system. A capacity of 4 calls means: 4 simultaneous calls can be made from the 3CX system to the PSTN. Each call can be a voice or fax call.



For ISDN PRI or T1 robbed-bit lines in the US

Patton ISDN PRI gateways have 1 or 4 physical PRI interfaces, and there are different models to cover the whole range of capacity from 15 to 120 voice calls. You can pick the one that comes closest to your required capacity and only pay the price for what you actually need. Call capacity is limited by software and can be increased through software licenses.

PRI Lines	Call Capacity	Model	Notes
1	15	SN4960/1E15V/UI	
1	24	SN4960/1E24V/UI	Best Value!
4	15	SN4960/4E15V/UI	
4	24	SN4960/4E24V/UI	More versatile option
4	48	SN4960/4E48V/UI	
4	96	SN4960/4E96V/UI	

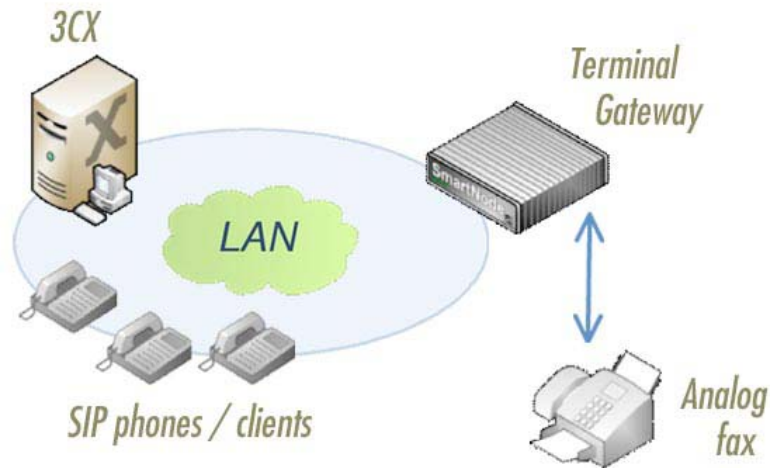
For analog lines

Patton analog FXO gateways have 2 to 4 physical analog interfaces. The number of interfaces is equal to the call capacity. For 8, 12 and 16 lines, you can easily stack several 4 port models.

FXO Lines	Call Capacity	Model	Notes
2	2	SN4112/JO/EUI	
4	4	SN4114/JO/EUI	Best Value!

Choosing a Terminal Gateway

To integrate analog devices like fax machines, modems or wireless DECT phones with your 3CX phone system, you need a terminal gateway. Patton offers terminal gateways with support from a single up to 32 lines. All devices can easily be stacked.



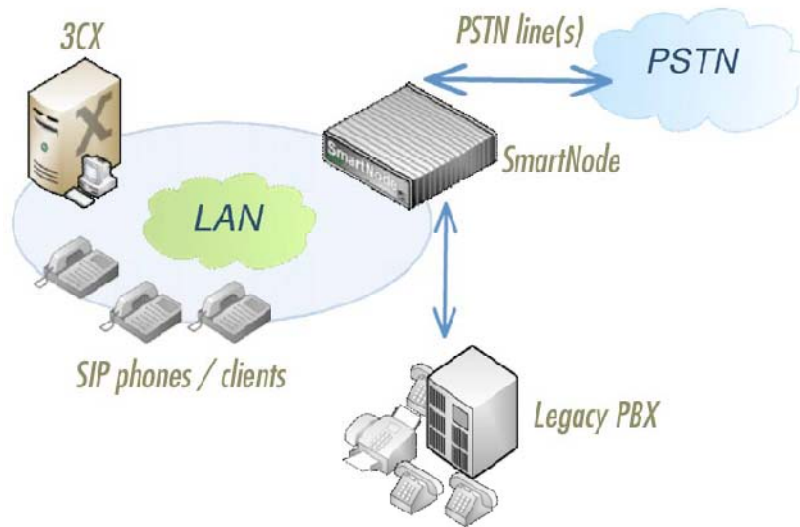
Please consider the following models:

FXS Ports	Call Capacity	Model	Notes
1	1	M-ATA/EUI	
4	4	SN4114/JS/EUI	
6	6	SN4116/JS/EUI	
8	8	SN4118/JS/EUI	
24	24	SN4924/JS/RUI	
32	32	SN4932/JS/RUI	

Migrating Smoothly from Legacy to IP

You might want to keep your existing PBX, at least for a certain period of time. How to interface the old PBX system with the new 3CX system? Patton SmartNodes can also answer this question. We are calling this setup “drop-and-insert” (because the SmartNode is inserted between the PBX and the PSTN lines), and its advantages are:

- Still use your old PBX system as long as you want
- Immediately start the 3CX system without having to disrupt the PBX service
- Both the old PBX and 3CX “share” the PSTN lines – they both can make outgoing calls
- Route incoming calls to 3CX or the old PBX depending on the called or calling party number
- Switch off your old PBX at your leisure



For ISDN PRI or T1 robbed-bit lines in the US

T1 interfaces that connect to the PSTN are called to be “user” side or “slave”. T1 interfaces that connect to a PBX are called “network” side or “master”. On the Patton SmartNode T1 devices, all interfaces can be software configured to be either “user” or “network” – so you can use any model with more than 1 interface in the drop-and-insert application.

User Lines	Network Lines	Call Capacity	Model	Notes
1	1	15	SN4960/4E15V/UI	
1	1	24	SN4960/4E24V/UI	
2	2	48	SN4960/4E48V/UI	

For analog lines

Analog interfaces that connect to the PSTN are called FXO. Analog interfaces that connect to the PBX are called FXS (see also the corresponding tech note at http://www.patton.com/technotes/fxs_fxo.pdf). The following SmartNode models have both FXS and FXO interfaces, so they are suited for the drop-and-insert application. For larger installations (more ports), SmartNodes can also be stacked to perform the same function.

FXO Lines	FXS Lines	Call Capacity	Model	Notes
2	2	4	SN4114/2JS2JO/EUI	
4	4	8	SN4118/4JS4JO/EUI	

Additional Information

Contacting 3CX

3CX Wiki: <http://wiki.3cx.com/>

Contacting Patton

Email: support@patton.com (will be answered within 1 business day)

Phone: 301.975.1007

Contacting Deerfield.com

Email: sales@deerfield.com

Phone: 989.732.8856

Skype: skype.deerfield